

AmerLink™

**JACKETED TOP DRIVE
SERVICE LOOPS**



**AmerCable
Systems**

AmerLink™

JACKETED TOP DRIVE SERVICE LOOPS

**BUILT TOUGHER.
KEEPS YOU
DRILLING
LONGER.**

Ask about our
field trial and
3rd party
testing results!

The **AmerLink™** jacketed top drive service loop is a *significant* design improvement over traditional hose-encased designs.

AmerLink's innovative construction elements work independently and collectively to support the weight and dynamic loads experienced in drilling operations. This next-generation, patented design technology eliminates many of the problems associated with hose-encased loops.



- **UNITED STATES PATENT NO. 9,449,737**
For complete loop assembly.
- **DIRECT DROP-IN DESIGN**
No modifications to existing bracket required.

- **REINFORCED INDUSTRIAL-STRENGTH PROTECTIVE JACKET**

- Designed for the extreme dynamic forces common in drilling operations
- Redundant mold-cured jacket, reinforced with stainless steel armoring and aramid fibers, provides super-tough, longer-lasting protection
- Carries the entire assembly load and prevents water ingress

- **SUPERIOR PULL-OUT / BREAKING STRENGTH**

58% improvement
(+7000 lbs) over potted
hose loops!



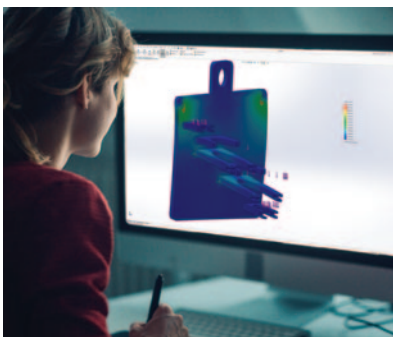
www.AmerCable.com
systems.sales@nexans.com



**FASTER
RIG-UP &
RIG-DOWN**

AmerLink delivers higher, longer-lasting performance in a smaller diameter, lighter weight service loop.

- **CUSTOM BRACKET DESIGN SERVICE FOR TOP DRIVE UPGRADES**

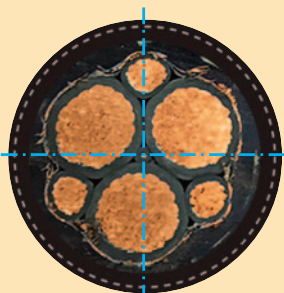


AmerLink's smaller diameter, greater flexibility and smaller bend radius **takes up less space in the mast**, making it ideal for top drive upgrades requiring more than one power loop.



- **LESS WEIGHT***
3% less for power loops and up to 21% less for instrumentation/control loops.
- **SMALLER BEND RADIUS**
16% smaller for power loops and up to 37% smaller for instrumentation/control loops.
- **HIGHLY FLEXIBLE & SMALLER DIAMETER**
More flexible than hose-encased design.
- **LOWER SHIPPING COSTS**
Lower weight and smaller bend radius can provide up to 5% in freight savings.

*Based on twin 400HP top drive with 3-loop system (777 VFD power, instrument, and auxiliary power). Contact factory for detailed information on a specific top drive.

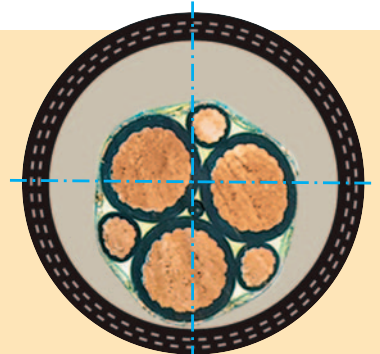


AmerLink

NATURAL CENTERING OF CONDUCTORS

AmerLink's manufacturing process centers the loop conductors, which balances stress on the components and delivers longer service life.

Hose-encased potted-loops have off-center cores, which puts increased stress on components during bending cycles.



Potted Hose-Encased

AmerLink™

JACKETED TOP DRIVE SERVICE LOOPS

**BUILT TOUGHER.
KEEPS YOU
DRILLING
LONGER.**



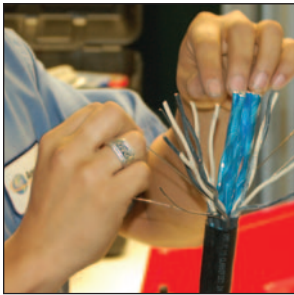
CONSISTENT MANUFACTURING QUALITY

Producing this style loop with a mold-cured jacket requires large cabling, braiding, and specialized extrusion equipment which only a cable manufacturer like AmerCable can offer.

AmerLink jacketed service loops are produced at our cable manufacturing facility in El Dorado, Arkansas, and then completed at our AmerCable Systems facility in Houston, Texas.



Our highly experienced technicians can install connectors as required. Each loop is computer-tested and packaged in weather resistant containers.



Made in America

FOLLOW US!



2747 West Grand Parkway N
Suite A • Katy, TX
800-506-9473 • 713-896-5800
www.AmerCable.com