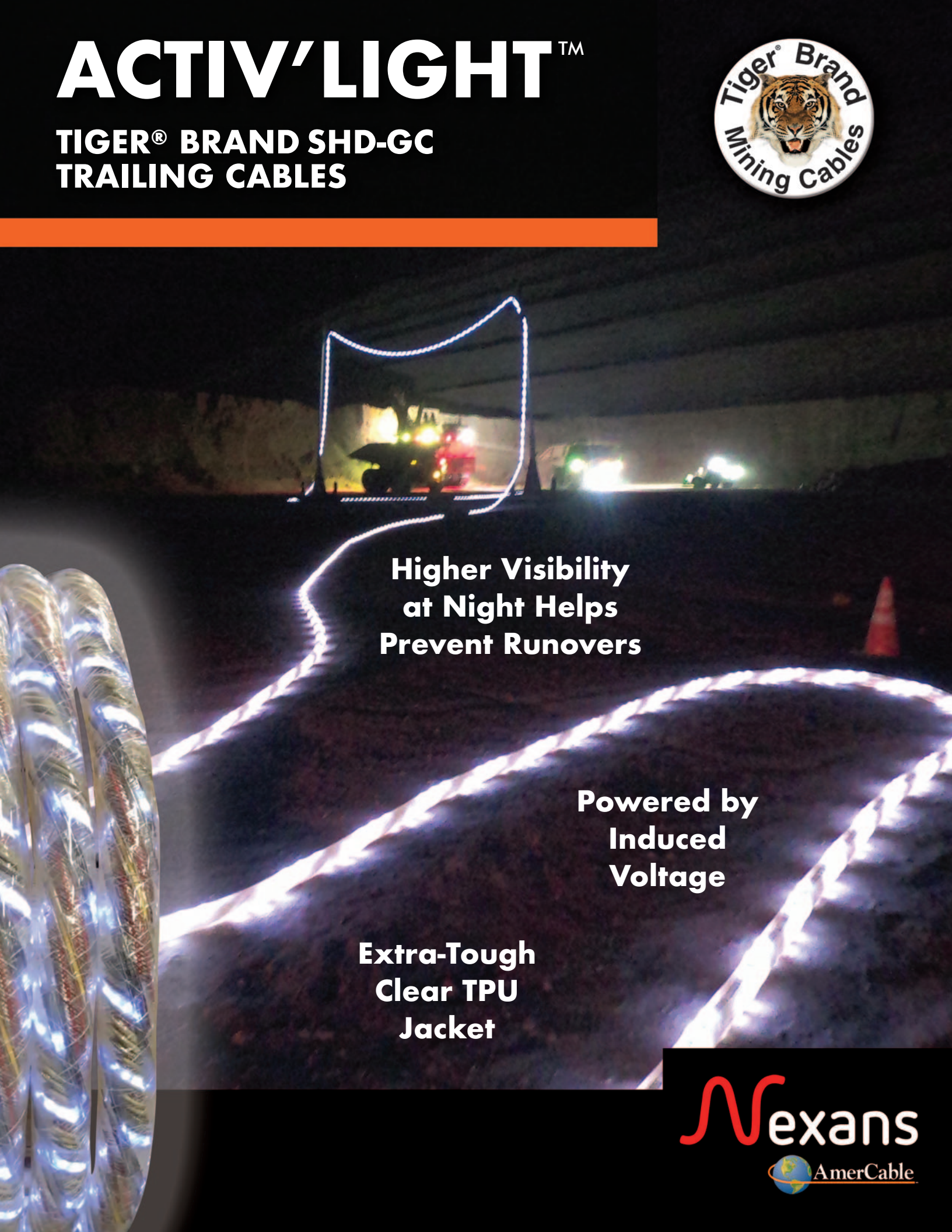


ACTIV'LIGHT™

**TIGER® BRAND SHD-GC
TRAILING CABLES**



**Higher Visibility
at Night Helps
Prevent Runovers**

**Powered by
Induced
Voltage**

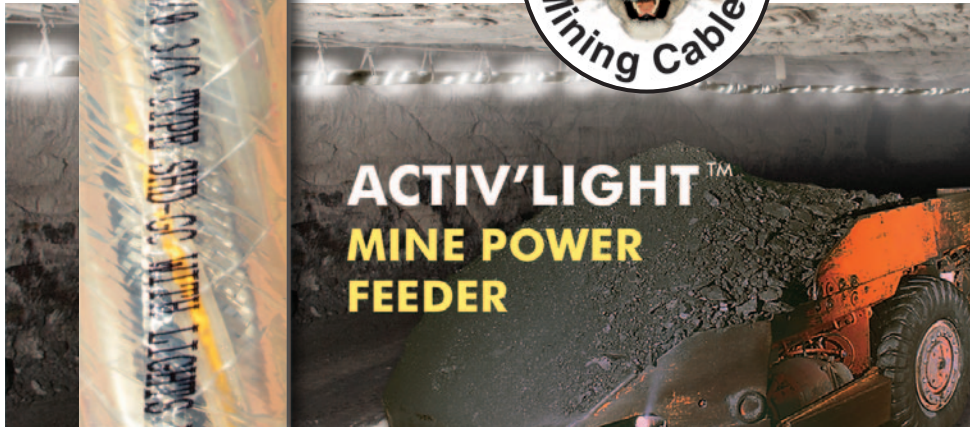
**Extra-Tough
Clear TPU
Jacket**

 **Nexans**
 AmerCable

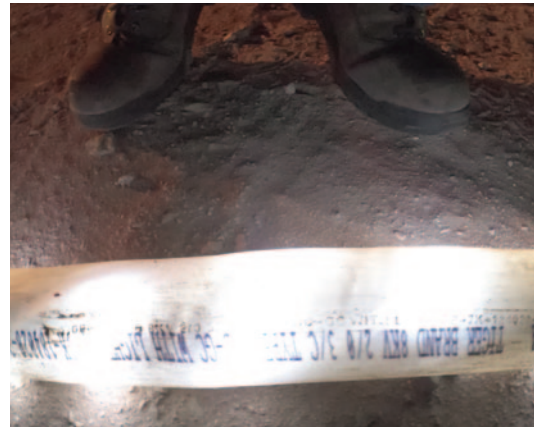


Higher Visibility
at Night Helps
Prevent Runovers

Available with
WHITE or **RED**
LED Lights



ACTIV'LIGHT™
MINE POWER
FEEDER



OVERVIEW

- ACTIV'LIGHT's clear TPU jacket is designed for extremely abrasive environments. Compared to Tiger® Brand CPE jackets, TPU offers:
 - 5X more abrasion resistance
 - 2X more tear resistance and tensile strength
 - Up to 8% less jacket weight
- Heavy-duty high-voltage portable power cable for use in circuits not exceeding the rated voltage.
- Tiger® Brand cables meet or exceed ICEA Standard S-75-381/NEMA WC-58.
- Recommended maximum continuous conductor temperature 90°C.
- Available in 2kV - 25kV.
- Color Options: White (standard) or Red

APPROVALS

ACTIV'LIGHT LED lighting is an add-on to Tiger® Brand mining cables which are compliant to:

- Mine Safety & Health Administration 184-MSHA.
- Pennsylvania Department of Environmental Protection P-184.
- Insulated Cable Engineers Association S-75-381/NEMA WC-58. Design standard for mining cables.

800-643-1516 • 870-862-4919 • Fax: 870-862-9613
email: mining.sales@nexans.com
www.AmerCable.nexans.com

