

# DATA CENTER POWER CABLES

**Shortest  
Lead Times**

**Best at On-Time  
Delivery**

**DLO**

**HEAVY DUTY, FLEXIBLE  
POWER CABLE  
2KV**

**MV-105**

**1C & 3C MEDIUM VOLTAGE  
POWER CABLE  
5KV- 25KV 100% & 133%  
35KV 100%**



**AmerCable**

# FLEXIBLE POWER CABLE • DLO

## 2000 VOLTS • 90°C



DIESEL LOCOMOTIVE CABLE • LIMITED SMOKE (SIZES 2/0 AND HIGHER) • EP/CPE • RHH, RHW-2

### CONDUCTOR

Flexible-stranded,  
tin-coated annealed  
copper

### JACKET

Flame retardant,  
oil and sunlight  
resistant  
Chlorinated  
Polyethylene (CPE)

See below  
for jacket  
color options  
(Special order)



### SEPARATOR

Suitable separator tape  
provides easy stripping  
of insulation

### INSULATION

Ethylene-Propylene rubber  
(EPR)

## APPLICATIONSAPPLICATION

AmerCable's 2000V Diesel Locomotive Cable (DLO) is a single conductor portable power cable suitable for use in applications needing great flexibility, excellent wearability and good flex life. Applications include locomotive and car equipment, motor and generator leads, battery leads, shipyards, telecommunications power, heavy earth moving equipment, renewable energy and other heavy duty flexing applications.

## FEATURES

- A two layer composite of flame retardant, oil and sunlight resistant Chlorinated Polyethylene (CPE) outer layer and Ethylene-Propylene rubber (EPR) inner layer. The composite design provides significant diameter reductions compared to designs using full thickness jackets.
- Suitable for continuous operating temperatures of 90°C, wet or dry
- Rated RHH, RHW-2; 2/0 – 1111 kcmil listed and marked "for CT use"
- UL listed as Sunlight Resistant
- UL listed as Marine Shipboard Cable (4/0 and larger) – Special order only
- Insulation and jacket meet hazardous waste regulations, per Code of Federal Regulations 40 Section 261 (40CFR261) for characteristic lead content
- Flame Resistance: FT-4/IEEE1202 for 2/0 – 1111 kcmil and UL VW-1
- Meets smoke release and other requirements of Vertical Cable Tray Test UL 1685 and is marked "ST-1" for 2/0 – 1111 kcmil
- Extremely flexible stranding used for increased flexibility and ease of installation

## RATINGS & APPROVALS

- ICEA S-95-658/ NEMA WC-70: Nonshielded Power Cables Rated 2000 Volts or Less for the Distribution of Electrical Energy
- UL Standard 44: Thermoset Insulated Wires & Cables, Types RHH, RHW-2. UL VW-1
- UL Standard 1685: Vertical Tray Fire propagation and Smoke Release Test for Electrical and optical Fiber Cables. (UL,ST-1)
- CSA C22.2 No. 38 Thermoset Wires & Cables, Type RW90
- ASTM B-33: Standard Specification for Tinned Soft or Annealed Copper Wire for Electrical Purposes
- ASTM B-172: Standard Specification for Rope-Lay-Stranded Copper Conductors having Bunch-Stranded Members, for Electrical Conductors
- MSHA P-184
- RoHS Compliant

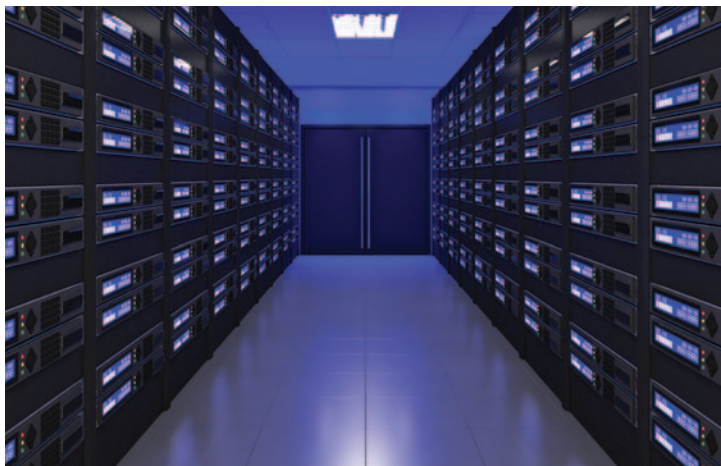
### 37-119 • SINGLE CONDUCTOR PORTABLE POWER CABLE • DLO

| Part No.<br>37-119- | Size<br>AWG/<br>kcmil | Minimum<br>Wires per<br>Conductor | Nominal<br>Insulation<br>Thickness<br>in. | Nominal<br>Jacket<br>Thickness<br>in. | Nominal<br>Outside<br>Diameter<br>in. | Approx.<br>Weight<br>lbs. per<br>1,000 ft. | *Ampacity<br>90°C |
|---------------------|-----------------------|-----------------------------------|---|---------------------------------------|---------------------------------------|--|-------------------|
| 201                 | 14                    | 19                                | 0.045                                     | 0.015                                 | 0.214                                 | 31   | 35                |
| 202                 | 12                    | 19                                | 0.045                                     | 0.015                                 | 0.233                                 | 41   | 40                |
| 203                 | 10                    | 37                                | 0.045                                     | 0.015                                 | 0.257                                 | 58   | 55                |
| 204                 | 8                     | 168                               | 0.055                                     | 0.030                                 | 0.349                                 | 77   | 80                |
| 205                 | 6                     | 61                                | 0.055                                     | 0.030                                 | 0.365                                 | 124  | 105               |
| 207                 | 4                     | 133                               | 0.055                                     | 0.030                                 | 0.460                                 | 203  | 140               |
| 209                 | 2                     | 259                               | 0.055                                     | 0.030                                 | 0.534                                 | 265  | 190               |
| 210                 | 1                     | 224                               | 0.065                                     | 0.045                                 | 0.623                                 | 415  | 220               |
| 211                 | 1/0                   | 266                               | 0.065                                     | 0.045                                 | 0.668                                 | 489  | 260               |
| 212                 | 2/0                   | 323                               | 0.065                                     | 0.045                                 | 0.689                                 | 562  | 300               |
| 213                 | 3/0                   | 418                               | 0.065                                     | 0.045                                 | 0.771                                 | 757  | 350               |
| 214                 | 4/0                   | 532                               | 0.065                                     | 0.045                                 | 0.822                                 | 894  | 405               |
| 215                 | 262                   | 646                               | 0.075                                     | 0.065                                 | 0.957                                 | 1091                                       | 467               |
| 216                 | 313                   | 777                               | 0.075                                     | 0.065                                 | 1.008                                 | 1245                                       | 522               |
| 217                 | 373                   | 925                               | 0.075                                     | 0.065                                 | 1.074                                 | 1486                                       | 591               |
| 218                 | 444                   | 1110                              | 0.075                                     | 0.065                                 | 1.143                                 | 1749                                       | 652               |
| 219                 | 535                   | 1332                              | 0.090                                     | 0.065                                 | 1.257                                 | 2099                                       | 728               |
| 220                 | 646                   | 1591                              | 0.090                                     | 0.065                                 | 1.361                                 | 2464                                       | 815               |
| 221                 | 777                   | 1924                              | 0.090                                     | 0.065                                 | 1.439                                 | 2899                                       | 904               |
| 222                 | 929                   | 2318                              | 0.090                                     | 0.065                                 | 1.685                                 | 3501                                       | 1005              |
| 223                 | 1111                  | 2745                              | 0.130                                     | 0.065                                 | 1.850                                 | 4166                                       | 1119              |



\* **Ampacity** – Calculated with at 90°C conductor temperature and 30°C ambient air, per 2008 NEC, Table 310.17

• Cable diameters are subject to +/-5% manufacturing tolerance



SAVE  
TIME

Order Your DLO Cable with

## Factory Installed Connectors

SAVE  
MONEY

# MV-105 Medium Voltage Power Cable

- 5kV 133% Insulation Level
- 8kV 100% Insulation Level

## Conductor

Bare, annealed copper conforming to ASTM B3 and Class B Compact stranded in accordance with ASTM B496.

## Grounding Conductor

Bare, annealed copper conforming to ASTM B3 and Class B stranded in accordance with ASTM B8.

## Insulation Shield Nonmetallic

Extruded semiconducting insulation shield meets or exceeds electrical and physical requirements of UL 1072.

## Conductor Shield

Extruded semiconducting conductor shield meets or exceeds electrical and physical requirements of UL 1072.

## Insulation

EPR meets or exceeds electrical and physical requirements of UL 1072.

## Metallic Shield

Bare copper tape shield helically wrapped to provide 100% coverage.

## Binder Tape

Synthetic material assembles the core in an essentially round configuration.

## Jacket

Mold-cured thermosetting Chlorinated Polyethylene (CPE) Jacket. Black jacket is standard.



## APPLICATION

AmerCable medium voltage power cables are recommended for use as feeder circuits, in electric utility generating stations, for distribution circuits, and for feeders or branch circuits in industrial and commercial installations. Type MV cables may be installed in wet or dry locations, indoors or outdoors (exposed to sunlight), in any raceway or underground duct, directly buried if installed in a system with a grounding conductor in close proximity that conforms with NEC Section 250.4(A)(5), or messenger supported in industrial establishments and electric utilities.

## FEATURES

- UL listed as Type MV-105
- Flame retardant: UL 1685, IEEE 1202 and CSA FT4 vertical tray flame tests
- Excellent mechanical and physical properties
- Sunlight resistant jacket
- Suitable for direct burial, use in cable tray and embedment in concrete

## BEND RADIUS

- Fixed position: 7 x cable overall diameter
- During pulling: 12 x cable overall diameter

## RATINGS & APPROVALS

- 105°C Temperature Rating
- Emergency Temperature Ratings
  - Overload: 140°C
  - Short Circuit: 250°C
- Meets UL 1072 requirements for medium voltage power cables
- Insulation meets electrical and physical requirements of ICEA S-93-639/NEMA WC 74 and UL 1072
- Meets AEIC CS 8 – specification for extruded dielectric shielded power cables rated 5 - 46kV (Qualification Test Requirements).
- Meets ICEA S-97-682 Standard for Shielded Utility Cable Rated for 5-46kV



## 5kV • 100% INSULATION • 1/C

| Part Number (37-505) | Size | Insulation Thickness | Outside Diameter | Weight (lbs/Kft) | Ampacities |            |               | DC Res. 20C Ω/kft | DC Res. 25C Ω/kft | AC Resist. 90C, 60 Hz Ω/kft | Inductive Reactance 90C, 60 Hz Ω/kft | Voltage Drop Volts/ Amps/kft |
|----------------------|------|----------------------|------------------|------------------|------------|------------|---------------|-------------------|-------------------|-----------------------------|--------------------------------------|------------------------------|
|                      |      |                      |                  |                  | In Air     | Cable Tray | Direct Burial |                   |                   |                             |                                      |                              |
| 101                  | 8    | 90                   | 0.575            | 231              | 74         | –          | 69            | 0.6535            | 0.6663            | 0.8332                      | 0.056                                | 0.700                        |
| 102                  | 6    | 90                   | 0.605            | 277              | 99         | –          | 92            | 0.4112            | 0.4192            | 0.5242                      | 0.053                                | 0.451                        |
| 103                  | 4    | 90                   | 0.645            | 344              | 130        | –          | 120           | 0.2585            | 0.2636            | 0.3296                      | 0.049                                | 0.293                        |
| 104                  | 2    | 90                   | 0.700            | 448              | 175        | –          | 155           | 0.1626            | 0.1659            | 0.2075                      | 0.045                                | 0.193                        |
| 105                  | 1    | 90                   | 0.735            | 518              | 205        | –          | 180           | 0.1289            | 0.1315            | 0.1644                      | 0.043                                | 0.157                        |
| 106                  | 1/0  | 90                   | 0.770            | 603              | 240        | 218        | 210           | 0.1022            | 0.1042            | 0.1304                      | 0.041                                | 0.129                        |
| 107                  | 2/0  | 90                   | 0.810            | 707              | 275        | 248        | 235           | 0.0811            | 0.0827            | 0.1035                      | 0.040                                | 0.107                        |
| 109                  | 4/0  | 90                   | 0.950            | 1035             | 475        | 334        | 310           | 0.0510            | 0.0520            | 0.0653                      | 0.038                                | 0.075                        |
| 110                  | 250  | 90                   | 0.995            | 1179             | 415        | 371        | 345           | 0.0432            | 0.0440            | 0.0553                      | 0.037                                | 0.066                        |
| 111                  | 350  | 90                   | 1.095            | 1546             | 515        | 461        | 415           | 0.0308            | 0.0314            | 0.0396                      | 0.035                                | 0.053                        |
| 112                  | 500  | 90                   | 1.215            | 2074             | 645        | 581        | 505           | 0.0361            | 0.0220            | 0.0280                      | 0.034                                | 0.043                        |
| 113                  | 750  | 90                   | 1.460            | 3001             | 835        | 750        | 630           | 0.0144            | 0.0147            | 0.0191                      | 0.031                                | 0.034                        |

## 5kV 133% INSULATION • 8kV 100% INSULATION • 1/C

| Part Number (37-505) | Size | Insulation Thickness | Outside Diameter | Weight (lbs/Kft) | Ampacities |            |               | DC Res. 20C Ω/kft | DC Res. 25C Ω/kft | AC Resist. 90C, 60 Hz Ω/kft | Inductive Reactance 90C, 60 Hz Ω/kft | Voltage Drop Volts/ Amps/kft |
|----------------------|------|----------------------|------------------|------------------|------------|------------|---------------|-------------------|-------------------|-----------------------------|--------------------------------------|------------------------------|
|                      |      |                      |                  |                  | In Air     | Cable Tray | Direct Burial |                   |                   |                             |                                      |                              |
| 118                  | 6    | 115                  | 0.645            | 302              | 110        | –          | 97            | 0.4112            | 0.4192            | 0.5242                      | 0.054                                | 0.452                        |
| 119                  | 4    | 115                  | 0.690            | 374              | 140        | –          | 125           | 0.2585            | 0.2636            | 0.3296                      | 0.050                                | 0.294                        |
| 120                  | 2    | 115                  | 0.745            | 480              | 195        | –          | 165           | 0.1626            | 0.1659            | 0.2075                      | 0.047                                | 0.194                        |
| 121                  | 1    | 115                  | 0.775            | 547              | 225        | –          | 185           | 0.1289            | 0.1315            | 0.1644                      | 0.044                                | 0.158                        |
| 122                  | 1/0  | 115                  | 0.815            | 636              | 255        | 218        | 215           | 0.1022            | 0.1042            | 0.1304                      | 0.043                                | 0.130                        |
| 123                  | 2/0  | 115                  | 0.895            | 779              | 295        | 251        | 245           | 0.0811            | 0.0827            | 0.1035                      | 0.042                                | 0.108                        |
| 125                  | 4/0  | 115                  | 0.995            | 1076             | 390        | 334        | 315           | 0.0510            | 0.0520            | 0.0653                      | 0.039                                | 0.076                        |
| 126                  | 250  | 115                  | 1.040            | 1222             | 430        | 371        | 345           | 0.0432            | 0.0440            | 0.0553                      | 0.038                                | 0.067                        |
| 127                  | 350  | 115                  | 1.135            | 1586             | 525        | 458        | 415           | 0.0308            | 0.0314            | 0.0396                      | 0.036                                | 0.053                        |
| 128                  | 500  | 115                  | 1.255            | 2119             | 650        | 574        | 500           | 0.0361            | 0.0220            | 0.0280                      | 0.034                                | 0.043                        |
| 129                  | 750  | 115                  | 1.505            | 3059             | 820        | 743        | 610           | 0.0144            | 0.0147            | 0.0191                      | 0.032                                | 0.034                        |

## 5kV 133% INSULATION • 8kV 100% INSULATION • 3/C

| Part Number (37-505) | Size | Ground Size | Insulation Thickness | Outside Diameter | Weight (lbs/Kft) | Ampacities |            |               | DC Res. 20C Ω/kft | DC Res. 25C Ω/kft | AC Resist. 90C, 60 Hz Ω/kft | Inductive Reactance 90C, 60 Hz Ω/kft | Voltage Drop Volts/ Amps/kft |
|----------------------|------|-------------|----------------------|------------------|------------------|------------|------------|---------------|-------------------|-------------------|-----------------------------|--------------------------------------|------------------------------|
|                      |      |             |                      |                  |                  | In Air     | Cable Tray | Direct Burial |                   |                   |                             |                                      |                              |
| 302                  | 6    | 6           | 115                  | 1.305            | 1099             | 105        | 87         | 95            | 0.4112            | 0.4192            | 0.5242                      | 0.049                                | 0.449                        |
| 303                  | 4    | 6           | 115                  | 1.400            | 1304             | 135        | 114        | 125           | 0.2585            | 0.2636            | 0.3296                      | 0.045                                | 0.291                        |
| 304                  | 2    | 6           | 115                  | 1.520            | 1642             | 185        | 157        | 160           | 0.1626            | 0.1659            | 0.2075                      | 0.042                                | 0.191                        |
| 305                  | 1    | 4           | 115                  | 1.590            | 1913             | 210        | 176        | 185           | 0.1289            | 0.1315            | 0.1644                      | 0.040                                | 0.156                        |
| 306                  | 1/0  | 4           | 115                  | 1.635            | 2032             | 240        | 204        | 210           | 0.1022            | 0.1042            | 0.1304                      | 0.038                                | 0.127                        |
| 307                  | 2/0  | 4           | 115                  | 1.810            | 2632             | 275        | 233        | 235           | 0.0811            | 0.0827            | 0.1035                      | 0.037                                | 0.105                        |
| 309                  | 4/0  | 3           | 115                  | 2.030            | 3619             | 360        | 304        | 305           | 0.0510            | 0.0520            | 0.0653                      | 0.035                                | 0.073                        |
| 310                  | 250  | 3           | 115                  | 2.125            | 4133             | 400        | 333        | 335           | 0.0432            | 0.0440            | 0.0553                      | 0.034                                | 0.065                        |
| 311                  | 350  | 2           | 115                  | 2.335            | 5271             | 490        | 409        | 400           | 0.0308            | 0.0314            | 0.0396                      | 0.032                                | 0.051                        |
| 312                  | 500  | 1           | 115                  | 2.595            | 7100             | 600        | 499        | 485           | 0.0361            | 0.0220            | 0.0280                      | 0.031                                | 0.041                        |
| 313                  | 750  | 1/0         | 115                  | 3.190            | 10359            | 745        | 603        | 585           | 0.0144            | 0.0147            | 0.0191                      | 0.029                                | 0.033                        |

**Notes:**

- 1) Ampacities in air are based on NEC 2017 Table 310.60(C)(71), for insulated three conductor copper cable isolated in air, maximum conductor temperature of 105°C, ambient air temperature of 40°C.
- 2) Ampacities in cable tray are based on NEC 2017 Table 310.60(C)(75), for insulated three conductor copper cable in isolated conduit in air, maximum conductor temperature of 105°C, ambient air temperature of 40°C.
- 3) Ampacities for direct burial are based on NEC 2017 Table 310.60(C)(83), for insulated three conductor copper cable, directly buried, maximum conductor temperature of 105°C, ambient earth temperature of 20°C, 100 percent load factor, earth thermal resistivity of 90°C cm / W.

# MV-105 Medium Voltage Power Cable Rated 15kV– 35kV



## Conductor

Bare, annealed copper conforming to ASTM B3 and Class B Compact stranded in accordance with ASTM B496.

## Grounding Conductor

Bare, annealed copper conforming to ASTM B3 and Class B stranded in accordance with ASTM B8.

## Insulation Shield Nonmetallic

Extruded semiconducting insulation shield meets or exceeds electrical and physical requirements of UL 1072.

## Conductor Shield

Extruded semiconducting conductor shield meets or exceeds electrical and physical requirements of UL 1072.

## Insulation

EPR meets or exceeds electrical and physical requirements of UL 1072.

## Metallic Shield

Bare copper tape shield helically wrapped to provide 100% coverage.

## Binder Tape

Synthetic material assembles the core in an essentially round configuration.

## Jacket

Mold-cured thermosetting Chlorinated Polyethylene (CPE) Jacket. Black jacket is standard.



## APPLICATION

AmerCable medium voltage power cables are recommended for use as feeder circuits, in electric utility generating stations, for distribution circuits, and for feeders or branch circuits in industrial and commercial installations. Type MV cables may be installed in wet or dry locations, indoors or outdoors (exposed to sunlight), in any raceway or underground duct, directly buried if installed in a system with a grounding conductor in close proximity that conforms with NEC Section 250.4(A)(5), or messenger supported in industrial establishments and electric utilities.

## FEATURES

- UL listed as Type MV-105
- Flame retardant: UL 1685, IEEE 1202 and CSA FT4 vertical tray flame tests
- Excellent mechanical and physical properties
- Sunlight resistant jacket
- Suitable for direct burial, use in cable tray and embedment in concrete
- Phase identification: Color coded (black, red, blue) polyester ribbon laid longitudinally under the copper shield tape

## BEND RADIUS

- Fixed position: 7 x cable overall diameter
- During pulling: 12 x cable overall diameter

## RATINGS & APPROVALS

- 105°C Temperature Rating
- Emergency Temperature Ratings
  - Overload: 140°C
  - Short Circuit: 250°C
- Meets UL 1072 requirements for medium voltage power cables
- Insulation meets electrical and physical requirements of ICEA S-93-639/NEMA WC 74 and UL 1072
  - Meets AEIC CS 8 – specification for extruded dielectric shielded power cables rated 5 - 46kV (Qualification Test Requirements).
- Meets ICEA S-97-682 Standard for Shielded Utility Cable Rated for 5-46kV



## 15kV • 133% INSULATION • 1/C

| Part Number (37-505) | Size | Insulation Thickness | Outside Diameter | Weight (lbs/Kft) | Ampacities |            |               | DC Res. 20C Ω/kft | DC Res. 25C Ω/kft | AC Resist. 90C, 60 Hz Ω/kft | Inductive Reactance 90C, 60 Hz Ω/kft | Voltage Drop Volts/ Amps/kft |
|----------------------|------|----------------------|------------------|------------------|------------|------------|---------------|-------------------|-------------------|-----------------------------|--------------------------------------|------------------------------|
|                      |      |                      |                  |                  | In Air     | Cable Tray | Direct Burial |                   |                   |                             |                                      |                              |
| 164                  | 2    | 220                  | 1.005            | 700              | 195        | –          | 165           | 0.1626            | 0.1659            | 0.2075                      | 0.054                                | 0.198                        |
| 165                  | 1    | 220                  | 1.035            | 774              | 225        | –          | 185           | 0.1289            | 0.1315            | 0.1644                      | 0.051                                | 0.162                        |
| 166                  | 1/0  | 220                  | 1.070            | 867              | 255        | 218        | 215           | 0.1022            | 0.1042            | 0.1304                      | 0.049                                | 0.134                        |
| 167                  | 2/0  | 220                  | 1.115            | 987              | 295        | 251        | 245           | 0.0811            | 0.0520            | 0.1035                      | 0.047                                | 0.111                        |
| 169                  | 4/0  | 220                  | 1.210            | 1295             | 390        | 334        | 315           | 0.0510            | 0.0440            | 0.0653                      | 0.044                                | 0.079                        |
| 170                  | 250  | 220                  | 1.275            | 1473             | 430        | 371        | 345           | 0.0432            | 0.0827            | 0.0553                      | 0.043                                | 0.070                        |
| 171                  | 350  | 220                  | 1.370            | 1856             | 525        | 458        | 415           | 0.0308            | 0.0314            | 0.0396                      | 0.040                                | 0.056                        |
| 172                  | 500  | 220                  | 1.480            | 2411             | 650        | 574        | 500           | 0.0361            | 0.0220            | 0.0280                      | 0.038                                | 0.045                        |
| 173                  | 750  | 220                  | 1.780            | 3478             | 820        | 743        | 610           | 0.0144            | 0.0147            | 0.0191                      | 0.036                                | 0.037                        |

## 15kV 133% INSULATION LEVEL • 3/C

| Part Number (37-505) | Size | Ground Size | Insulation Thickness | Outside Diameter | Weight (lbs/Kft) | Ampacities |            |               | DC Res. 20C Ω/kft | DC Res. 25C Ω/kft | AC Resist. 90C, 60 Hz Ω/kft | Inductive Reactance 90C, 60 Hz Ω/kft | Voltage Drop Volts/ Amps/kft |
|----------------------|------|-------------|----------------------|------------------|------------------|------------|------------|---------------|-------------------|-------------------|-----------------------------|--------------------------------------|------------------------------|
|                      |      |             |                      |                  |                  | In Air     | Cable Tray | Direct Burial |                   |                   |                             |                                      |                              |
| 357                  | 2    | 6           | 220                  | 2.045            | 2401             | 185        | 157        | 160           | 0.1626            | 0.1659            | 0.2075                      | 0.049                                | 0.195                        |
| 358                  | 1    | 4           | 220                  | 2.110            | 2729             | 210        | 176        | 185           | 0.1289            | 0.1315            | 0.1644                      | 0.047                                | 0.160                        |
| 359                  | 1/0  | 4           | 220                  | 2.190            | 3069             | 240        | 204        | 210           | 0.1022            | 0.1042            | 0.1304                      | 0.045                                | 0.131                        |
| 360                  | 2/0  | 4           | 220                  | 2.275            | 3343             | 275        | 233        | 235           | 0.0811            | 0.0827            | 0.1035                      | 0.043                                | 0.109                        |
| 362                  | 4/0  | 3           | 220                  | 2.490            | 4345             | 360        | 304        | 305           | 0.0510            | 0.0520            | 0.0653                      | 0.040                                | 0.076                        |
| 363                  | 250  | 3           | 220                  | 2.625            | 4957             | 400        | 333        | 335           | 0.0432            | 0.0440            | 0.0553                      | 0.039                                | 0.068                        |
| 364                  | 350  | 2           | 220                  | 2.895            | 6349             | 490        | 409        | 400           | 0.0308            | 0.0314            | 0.0396                      | 0.037                                | 0.054                        |
| 365                  | 500  | 1           | 220                  | 3.155            | 8359             | 600        | 499        | 485           | 0.0361            | 0.0220            | 0.0280                      | 0.035                                | 0.043                        |
| 366                  | 750  | 1/0         | 220                  | 3.655            | 11657            | 745        | 603        | 585           | 0.0144            | 0.0147            | 0.0191                      | 0.033                                | 0.035                        |

## 25kV 133% INSULATION • 35kV 100% INSULATION 1/C

| Part Number (37-505) | Size | Insulation Thickness | Outside Diameter | Weight (lbs/Kft) | Ampacities |            |               | DC Res. 20C Ω/kft | DC Res. 25C Ω/kft | AC Resist. 90C, 60 Hz Ω/kft | Inductive Reactance 90C, 60 Hz Ω/kft | Voltage Drop Volts/ Amps/kft |
|----------------------|------|----------------------|------------------|------------------|------------|------------|---------------|-------------------|-------------------|-----------------------------|--------------------------------------|------------------------------|
|                      |      |                      |                  |                  | In Air     | Cable Tray | Direct Burial |                   |                   |                             |                                      |                              |
| 180                  | 1/0  | 345                  | 1.350            | 1178             | 255        | 218        | 215           | 0.1022            | 0.1042            | 0.1304                      | 0.054                                | 0.144                        |
| 181                  | 2/0  | 345                  | 1.385            | 1296             | 295        | 248        | 245           | 0.0811            | 0.0827            | 0.1035                      | 0.052                                | 0.115                        |
| 183                  | 4/0  | 345                  | 1.485            | 1632             | 390        | 334        | 315           | 0.0510            | 0.0520            | 0.0653                      | 0.049                                | 0.072                        |
| 184                  | 250  | 345                  | 1.530            | 1797             | 430        | 368        | 345           | 0.0432            | 0.0440            | 0.0553                      | 0.047                                | 0.061                        |
| 185                  | 350  | 345                  | 1.625            | 2198             | 525        | 454        | 415           | 0.0308            | 0.0314            | 0.0396                      | 0.044                                | 0.043                        |
| 186                  | 500  | 345                  | 1.805            | 2890             | 650        | 566        | 500           | 0.0361            | 0.0220            | 0.0280                      | 0.043                                | 0.042                        |
| 187                  | 750  | 345                  | 2.055            | 3945             | 820        | 728        | 610           | 0.0144            | 0.0147            | 0.0191                      | 0.039                                | 0.020                        |

**Notes:**

- 1) Ampacities in air are based on NEC 2017 Table 310.60(C)(71), for insulated three conductor copper cable isolated in air, maximum conductor temperature of 105°C, ambient air temperature of 40°C.
- 2) Ampacities in cable tray are based on NEC 2017 Table 310.60(C)(75), for insulated three conductor copper cable in isolated conduit in air, maximum conductor temperature of 105°C, ambient air temperature of 40°C.
- 3) Ampacities for direct burial are based on NEC 2017 Table 310.60(C)(83), for insulated three conductor copper cable, directly buried, maximum conductor temperature of 105°C, ambient earth temperature of 20°C, 100 percent load factor, earth thermal resistivity of 90°C cm / W.

**AmerCable** manufactures high quality jacketed electrical cables for a wide variety of specialized industrial and utility applications.



**AmerCable** is an ISO 9001:2015 certified cable manufacturer that combines leading-edge technology, proven manufacturing techniques, and high quality service to deliver the finest industrial and utility cable products available.

**AmerCable** serves a worldwide customer base from our manufacturing facility in El Dorado, Arkansas. Our professional field engineering and sales force work directly with customers, or in partnership with our network of independent distributors, to identify and fulfill your specific cable requirements.



**Shortest Lead Times  
and  
Best at On-Time Delivery!**

**What's That Worth to Your  
Data Center Project?**



350 Bailey Road • El Dorado, AR USA • (870) 862-4919 • (800) 643-1516 • [www.AmerCable.com](http://www.AmerCable.com)